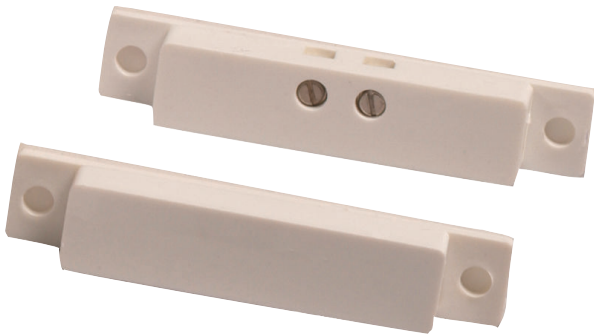




# ISN-C60 Slim Terminal Connection Contacts



- ▶ **Closed loop**
- ▶ **Install with screws or with super adhesive**
- ▶ **Breakaway mounting holes for a tight fit**
- ▶ **Slim terminal connection design**
- ▶ **Includes deactivated rhodium reed switch**
- ▶ **Includes screws, super adhesive, mounting holes, and tape cover**

The contacts are available in brown or white. Both models have a slim design with breakaway mounting holes for tight-fitting applications. The terminal connection eliminates the need for 15.24 cm or 25.4 cm (6 in. or 10 in.) leads.

## Certifications and Approvals

UL and CE

Region	Certification	
Europe	CE	73/23/EEC and 93/68/EEC, EN50131: 1997, EN50131-6: 1997, EN60950: 2000, EN60335-1: 1994 +A1: 1996 Annex B

## Installation/Configuration Notes

### Compatibility Information

All contact models are compatible with control panel models that accept contact inputs.

## Parts Included

Quantity Per Package	Component
10	Assemblies (contacts, screws, super adhesive, mounting holes, and tape covers)
10	Magnets

## Technical Specifications

### Specifications for All Models

Gap Width:	19 mm (0.75 in.)
Contact Dimensions:	6.35 mm x 9.5 mm x 50.8 mm (0.25 in. x 0.375 in. x 2 in.)
Switch Configuration Type:	Single pole single throw (SPST)
Maximum Contact Resistance:	150 $\mu\Omega$ (micro-ohm)
Minimum Breakdown Voltage:	250 VDC
Insulation Resistance:	10 <sup>10</sup> $\Omega$
Electrostatic Cap:	0.3 PF
Contact Capacity:	10 VAC
Maximum Conductive Current:	1.0 A
Maximum Voltage:	100 V
Operating Temperature Range:	7.2°C to -95.56°C (-45°F to -140°F)

### Package Information

**ATTENTION!** Each package contains ten assemblies with contacts, screws, super adhesive, mounting holes, tape covers, and ten magnets.

### Ordering Information

**Brown Slim Terminal Connection Contact**      **ISN-C60-B**  
Brown surface mount contact. **Package contains ten assemblies with contacts, screws, super adhesive, mounting holes, tape covers, and ten magnets.**

**White Slim Terminal Connection Contact**      **ISN-C60-W**  
White surface mount contact. **Package contains ten assemblies with contacts, screws, super adhesive, mounting holes, tape covers, and ten magnets.**

**Americas:**  
Bosch Security Systems, Inc.  
130 Perinton Parkway  
Fairport, New York, 14450, USA  
Phone: +1 800 289 0096  
Fax: +1 585 223 9180  
security.sales@us.bosch.com  
www.boschsecurity.us

**Europe, Middle East, Africa:**  
Bosch Security Systems B.V.  
P.O. Box 80002  
5600 JB Eindhoven, The Netherlands  
Phone: +31 40 2577 284  
Fax: +31 40 2577 330  
emea.securitysystems@bosch.com  
www.boschsecurity.com

**Asia-Pacific:**  
Robert Bosch (SEA) Pte Ltd, Security Systems  
11 Bishan Street 21  
Singapore 573943  
Phone: +65 6258 5511  
Fax: +65 6571 2698  
apr.securitysystems@bosch.com  
www.boschsecurity.com