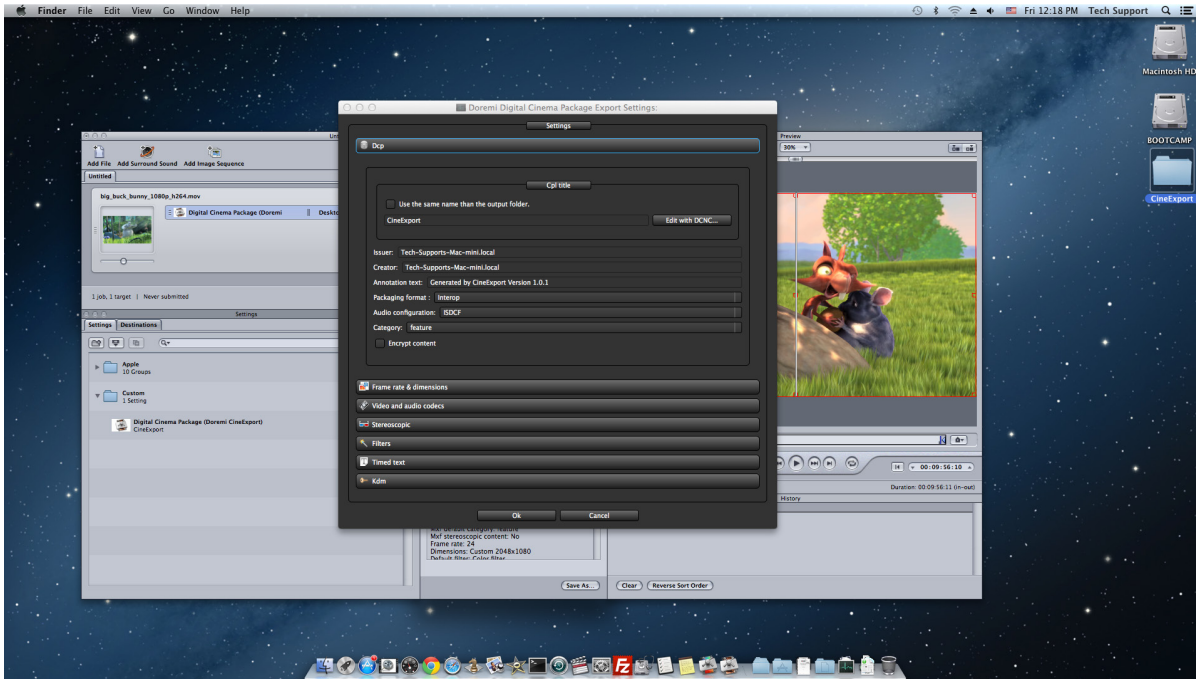




# Dolby® CineExport DCP Export Plug-in for Apple® Compressor



Dolby® CineExport is a plug-in for Apple® Compressor used to convert Final Cut Pro® sequences and popular media formats to 2D or 3D DCI-compliant digital cinema packages (DCPs) at resolutions up to 4K. MPEG-2-encoded DCPs and H.264-encoded DCPs can also be created for alternative content and compatible players. The Pro version of CineExport allows for the generation of encrypted DCPs along with key delivery message (KDM) generation for encrypted content.

## DOLBY CINEEXPORT KEY FEATURES

- Easily convert popular video formats to DCP
- Easily convert Final Cut Pro sequences to DCP
- Compatible with all formats supported by Compressor 3.5.3 and 4.0
- Standard and Pro versions available
- XYZ color-space conversion
- Adjust frame rate
- Uses digital cinema naming convention
- Stereoscopic support
- Custom LUT support
- High-frame-rate support, up to 96 fps
- Adjust resolution (up to 4K supported)
- Create DCPs with subtitles
- Interop and SMPTE packaging formats supported
- Certificate manager (Pro version only)
- Generate encrypted DCPs (Pro version only)
- Generate KDMs for encrypted content (Pro version only)



## Dolby CineExport DCP Export Plug-in for Apple Compressor

### SYSTEM REQUIREMENTS—MAC

---

- OS X: 10.7.X–10.10.X
- Compressor: versions 3.53 and 4.0
- RAM: 4 GB minimum; 8 GB recommended
- CPU: Intel® Core™ 2 duo minimum; Core i7 quad core or Xeon® recommended

### SUPPORTED OUTPUT FORMATS

---

#### JPEG 2000 DCP

- 2D and 3D at up to 4K resolution
- Bit rate up to 250 Mbps (500 Mbps for frame rates above 30 fps)
- XYZ (YCxCz for 3D) color conversion

#### MPEG-2 DCP

- I-Only or Long GOP
- 1080p up to 80 Mbps

#### H.264 DCP

- 1080p up to 50 Mbps

The English version of this document is the only legally binding version.  
Translated versions are not legally binding and are for convenience only.



Dolby Laboratories, Inc. 1275 Market Street, San Francisco, CA 94103-1410 USA T +1-415-558-0200 [dolby.com](http://dolby.com)

Dolby and the double-D symbol are registered trademarks of Dolby Laboratories. All other trademarks remain the property of their respective owners.  
© 2016 Dolby Laboratories, Inc. All rights reserved.