

3G PRODUCTS 4K ULTRA HD



VBS-HDMI-508POE

3G PoE Receiver- 4K over IP decoder

- Decodes the IP data back into a 4K or 1080p HDMI signal to be displayed on any screen.
- Can be set to scale 4K signals with HDCP 2.2 down to a 1080p signals for displaying on non HDCP 2.2-compliant 1080p TVs. Perfect for homes where there is that annoying 1080p set in a bathroom, basement or outdoor area.
- Can upscale 1080p signals to 4K.
- Can also be set to passthrough mode meaning that no scaling takes place. Passthrough mode is ideal for when you would prefer to rely on a TVs built-in upscaler.
- RS232 control
- Outputs any audio signal from stereo up to object-based formats (Dolby Atmos and DTS:X).
- If a source device is set to Dolby Digital 5.1 and connected to a 3G+AVPro transmitter, the 3G+PoE receiver can decode this as 2.0 channel if in a stereo audio zone, and can alternatively decode it as 5.1 in a multichannel zone.
- Fully PoE- no power supplies are needed.
- Can also be used to build 4K or 1080p video walls, from 2x2 to 16x16 in size.

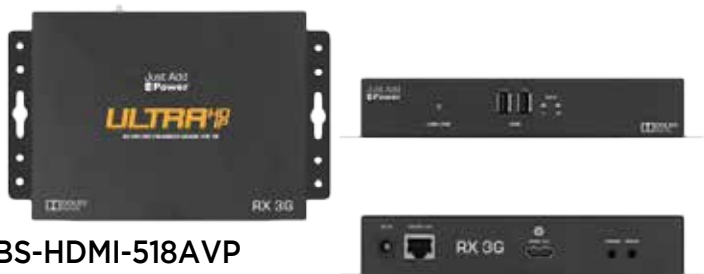


VBS-HDMI-707POE

3G PoE Transmitter- 4K over IP encoder

- Encodes 4K or 1080p signals from HDMI 2.0 or HDMI 1.4 or earlier sources into IP data and sends it over a local area network.
- Supports the transmission of 4K signals including 4K HDR content, as well as 1080p content, to multiple screens when integrated with a Gigabit Managed Network Switch.
- Works with new HDR sources like the Samsung UHD Blu Ray.
- Sends 4K up to 100m / 330 ft over Cat 5e.
- Supports the distribution of all audio formats including Dolby Atmos and DTS:X.
- Any number of source devices can be distributed from 2 - 2000!
- PoE - no power supply is necessary.
- RS232 control.
- Will work with all existing 3G Ultra HD over IP Transmitters and receivers(3G+AVPro TX, 3G+ HIFI TX, 3G+AVPro RX). You can mix and match all of these 3G Ultra HD over IP different models within the same network in order to get the exact audio and video features that you need for each room, and better managing project costs.
- Can also be used to build 4K or 1080p video walls, from 2x2 to 16x16 in size.

3G PRODUCTS 4K ULTRA HD



VBS-HDMI-518AVP

3G+ Receiver

- 23 ms ultra low latency.
- Dolby-downmixing from 5.1 to stereo
- Instant Seamless switching between any resolution HDMI source
- 2160P Ultra HD resolutions & HDMI 2.0 devices w/ HDCP 2.2 supported
- Built-in 4K scaler on RX- can downscale from 2160p to 1080p & upscale 1080p to 2160p.
- Supports Uncompressed Lossless Multi channel Audio formats inc. Dolby Atmos®
- Can engage a stereo analog audio output with full variable control from the HDMI audio stream
- Enhanced Video Wall functionality- support for portrait and flipped displays



VBS-HDMI-718AVP

3G+AVP Transmitter

- 23 ms ultra low latency.
- 2160P Ultra HD resolutions & HDMI 2.0 devices w/ HDCP 2.2 supported
- Instant Seamless switching between any resolution HDMI source
- Supports Uncompressed Lossless Multi channel Audio formats inc. Dolby Atmos®
- Converts 5.1 multichannel audio to Dolby PLII, giving you down mixing capabilities for stereo zones.
- Can engage a stereo analog audio output with full variable control from the HDMI audio stream.
- Enhanced Video Wall functionality- support for portrait and flipped displays, no more tears
- Image Pop™ :overlay a full color image/ logo on top of the HDMI signal with alphachannel transparency.



VBS-HDMI-717HIFI

3G+ HIFI Transmitterw/ Loop out 4K

- Work with existing 3G+AVP Receivers
- Can be mixed & matched in the same network as 3G+AVP Transmitters
- Dolby-downmixing from 5.1 to stereo
- 4K to 1080p up/downscaling capabilities
- Local HDMI output for 4K distribution projects that require support for uncompressed multichannel audio formats up to & including Dolby Atmos and DTS:X.



VBS-HDMI-749AVP

3G+ 3 input Rackmount AVPro Transmitter 4K

- 3G+AVP Ultra HD over IP Transmitters built in
- Selectable passthrough mode on each receiver, which delivers the same video resolution output by the source directly to the TV
- 4K to 1080p up/downscaling capabilities
- Instant Seamless switching between any resolution HDMI source
- Converts 5.1 multichannel audio to Dolby PLII.

3G PRODUCTS 4K ULTRA HD



VBS-HDMI-718WP4
(CUSTOM COLOR)

VBS-HDMI-718WP4B (BLACK)

VBS-HDMI-718WP4W (WHITE)

3G+ 4 Gang POE Wall Plate Transmitter

- Encodes a 1080p or 4K source HDMI device into IP & sends over the network.
- Encodes a VGA or Component source plus stereo audio into IP & sends over the network
- Dolby Downmixing from 5.1 to 2.0
- Two analog audio inputs that can mix with HDMI audio.
- Can engage a stereo analog audio output with full variable control from the HDMI audio stream.
- Supports HDCP 2.2
- 23 ms ultra low latency
- HDMI OUT pass through port
- Video wall support from 2x2 to 16x16 plus video walls in portrait mode supported.
- Control via RS232 or IP. IR Control of integrated sources and displays* portrait and flipped displays

Custom Color Options

Leviton colors: White, Ivory, Almond, Light Almond, Brown, Black, Red, Grey

Lutron colors: Eggshell, Biscuit, Beige, Stone, Limestone, Desert Stone, Moka Stone, Terracotta, Taupe, Arch. White & Brown



VBS-HDMI-717WP2
(CUSTOM COLOR)

VBS-HDMI-717WP2B (BLACK)

VBS-HDMI-717WP2W (WHITE)

3G+ 2 Gang POE Wall Plate Transmitter

- Encodes a 1080p or 4K source HDMI device into IP & sends over the network.
- Encodes a VGA or Component source plus stereo audio into IP & sends over the network
- Standard colors are Black and White - custom colors are also available
- Support for ALL HDMI audio formats including Dolby Atmos® & DTS:X®
- Supports HDCP 2.2
- 23 ms ultra low latency.
- Video wall support from 2x2 to 16x16 plus video walls in portrait mode supported.
- Control via RS232 or IP. IR Control of integrated sources / displays

Custom Color Options

Leviton colors: White, Ivory, Almond, Light Almond, Brown, Black, Red, Grey

Lutron colors: Eggshell, Biscuit, Beige, Stone, Limestone, Desert Stone, Moka Stone, Terracotta, Taupe, Arch. White & Brown

2G+ PRODUCTS 1080P



VBS-HDMI-459A

2G+ 4+ Video Tiling Processor

- 4 x 2G HD over IP Receivers on board
- 1 x 2G+AVPro HD over IP Post-Mix Transmitter w/ Dolby Digital DSP on board
- 1U 19" Rackmount Chassis
- Reversible Mounting Position
- HDMI Pass-through port on Transmitter for local display
- Control via IP, IR, or RS232.

System Drivers:

Third party control system drivers available for: Control4, Crestron, RTI, AMX, URC, Elan! G, & Netstreams.

2G PRODUCTS 1080P

VBS-HDMI-505POE

2G Omega /3G 1080p Transmitter

- Maximum 1080p video with HDCP 1.4
- Built-in Scaler - Watch any source at 1080p
- All lossless audio supported
- including Dolby Atmos
- Control endpoints with RS232 & IR
- Enhanced Video Wall with rotation
- Image Play - Push, Pull & Pop



VBS-HDMI-705POE

2G Omega /3G 1080p Transmitter

- Maximum 1080p video with HDCP 1.4
- All lossless audio supported
- including Dolby Atmos
- Control endpoints with RS232 & IR
- Image Play- Push, Pull & Pop
- Integrated Scalar on Receiver



VBS-HDMI-515POE

2G Omega/3G+ Receiver 1080p Max output (CEC,USB,Audio) POE

- Maximum 1080p video and HDCP 1.4
- Built-in video scaler (3G mode only)
- All audio formats
- Instant-seamless switching
- Video Wall
- 2-way RS232 control
- CEC control
- Stereo audio extraction with audio delay
- USB 2.0
- Image Pull | Image Push



VBS-HDMI-715POE

2G Omega/3G+ Transmitter 1080p Max input (CEC,USB,Audio) POE

- Maximum 1080p video and HDCP 1.4
- All audio formats
- Instant-seamless switching
- Stereo audio extraction w/ audio delay
- Video Wall
- 2-way RS232 control
- CEC control
- USB 2.0
- Image Pull



VBS-HDMI-428A

2G+ HD-SDI over IP Transmitter

- Embedded HTTP Server
- Locking HDMI Cables Supported
- 1 UTP/STP 1000Mbps Ethernet Ports
- Protocol: IP, UDP, TCP, ICMP, and IGMP
- 2 RS232 Ports plus 1 Null Modem Jumper Sets
- 1 HD-SDI In (BNC male) with multichannel compressed audio (i.e. Dolby Digital, DTS, THX)
- 1 Integrated 3.5mm Stereo Audio Extractors with programmable delay



VBS-HDMI-428POE

2G+ PoE HD-SDI Transmitter

- Stereo Audio Extractionw/ Adjustable Lip Sync
- Seamless Switching Between Sources
- Visually Lossless 1080p Video Transmission
- Built-in Video Wall Function
- Side-by-side HD 3D Support
- Power Over Ethernet supported
- Integrated RS232 port
- Image PULL supported



OMEGA SERIES



VBS-HDMI-716VGA

2G Omega 3G VGA Transmitter (supports 2G+3G platforms)

The VGA Transmitter allows owners to include VGA sources in their 2G or 3G HDIP network. It has a 3.5mm LINE-IN port to mix the VGA PC source audio with the video. It also has an RS232 port with null modem jumpers. Omega Transmitters and Receivers are designed so as to be able to run in 2G mode or 3G mode, but they are not UltraHD resolution devices.

ACCESSORIES



VBS-HDMI-IRD

- Serial to IR adaptor "Flux Capacitor"
- Turns serial port into IP addressable IR output
- Connects to RS232 port on a Receiver or Transmitter
- Converts RS232 into an IR signal

- Compatible with Pronto and Global Cache IR codes
- Conveniently powered through Receiver USB port



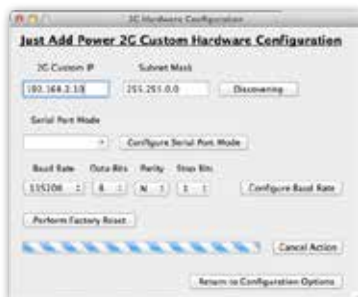
VBS-HDMI-RS1U

- 19" rack shelf (black) for use w/ Just Add Power 2G & 3G transmitters & receivers.
- Holds up to 13 x 2G, 2G+ or 3G Transmitters or Receivers vertically.
- When holding up to 13 x 3G devices, takes up a total of 5U high of rack space.
- Ideal for those large-scale residential and commercial HDMI over IP installations where the majority of Just Add Power hardware is located in a central AV rack.

Recommended switches are Luxul AMS and XMS series switches.

****All 2G and 3G require Gigabit Layer 3 Managed Switches****

INSTALLER PRO SOFTWARE



**RENEWAL
LICENSE FOR
INSTALL PRO
SOFTWARE**

JAS-IP-1

- Installer Pro Software
- InstallerPro is our tool for dealers to assist them in configuring a managed network switch for the Just Add Power HD over IP™ system. No longer does a dealer/installer need to be a networking expert to configure their video matrix.
- Windows and OS X Supported
- Configures the switch via RS-232

- Easy to use interface
- Features utilities to configure custom IP addresses on Just Add Power 2G hardware
- Features utilities to do some programming of Just Add Power 2G hardware
- Export configuration data to a CSV file - then edit it in Excel & load back in for fast programming.
- Configures switches from out of the box in 60 sec.

JAS-IP-R

- Software Renewal For Install Pro
- After the first year, a renewal license will need to be purchased in order to continue to receive updates and technical support.

MEDIA SWITCHER



COMMON FEATURES:

- MediaSwitcher allows full control of the Just Add Power HD over IP™ video matrix from a Macintosh, Windows or Linux computer. It allows easy and flexible control and provides an instant overview of the entire video matrix allowing the user to see what video sources are on specific screens.
- New flexible and configurable user interface
- Uses SQLite databases to store settings
- Support for multiple switches across large and complex networks.
- Customizable icons for each video source. When that source is selected for a TV, the main screen icon changes to the icon of the selected source. The user can add their own icons.
- Customizable main screen layout - drag and drop a background picture onto the main page and move your screens around. For example, a restaurant layout can be dropped onto the main page and then the TV screens moved to their positions in the layout!
- Automatic updater - if an update is released, it will be downloaded automatically
- Switch database - all switch commands are now stored in a database. This makes it easy to update and add new switches.
- Video Wall Support - MediaSwitcher 2.0 Wall edition adds support for controlling video walls using the Just Add Power 2G hardware.

JAS-MS2-PRO-WALL

- Same features as Pro, but adds video wall capability.

JAS-MS2-STD-WALL

- Same features as STD, but adds video wall capability.

JAS-MS2-LITE-WALL

- Same features as Lite, but adds video wall capability.

JAS-MSWEB

- Works together with MS2 software (LITE, STD, etc) if on the same network

MEDIA SWITCHER



COMMON FEATURES:

- MediaSwitcher allows full control of the Just Add Power HD over IP™ video matrix from a Macintosh, Windows or Linux computer. It allows easy and flexible control and provides an instant overview of the entire videomatrix allowing the user to see what video sources are on specific screens.
- New flexible and configurable user interface
- Uses SQLite databases to store settings
- Support for multiple switches across large and complex networks.
- Customizable icons for each video source. When that source is selected for a TV, the main screen icon changes to the icon of the selected source. The user can add their own icons.
- Customizable main screen layout - drag and drop a background picture onto the main page and move your screens around. For example, a restaurant layout can be dropped onto the main page and then the TV screens moved to their positions in the layout!
- Automatic updater - if an update is released, it will be downloaded automatically
- Switch database - all switch commands are now stored in a data base. This makes it easy to update and add new switches.
- Video Wall Support - MediaSwitcher 2.0 Wall edition adds support for controlling video walls using the Just Add Power 2G hardware.

JAS-MS2-PRO

- Allows control of up to 50 sources & 50 screens
- Features Presets, Sequences & Groups (allows changing pre-defined groups of screens together)

MAP \$1000.00

JAS-MS2-STD

- Allows Control of up to 16 Sources & 16 Screens
- Features Preset Function

MAP \$499.00

JAS-MS2-LITE

- Allows control of up to 8 sources & 12 screens

MAP \$150.00

JAS-MS-CUSTOM

- For anything over 50 sources or 50 screens
- Includes Wall Control
- Can be used for site licensing purposes
- Can include customizations in colors, windows, etc
- Pricing is negotiated on a case by case basis

MoreVue™ provides Just Add Power HD/IP™ system users running Layer 3 topologies the ability to receive on their computer live previews of any or all their devices. Nearly real time screen capture images are able to be displayed.

MoreVue features:

- View live real time image captures from any device in the network
- Choose from 5 different capture resolutions
- Obtain full resolution image capture from a device saved to disk as a PDF or JPEG file
- Resizable viewing window to allow customization of number of columns, view all images on screen at once and choose the size of the viewing window.
- Zoom in on a particular device and view its capture in larger image size
- Automatic updater - if an update is released, it will be downloaded automatically
- Built in Web Server for each device allows rapidly downloading captured images to other user devices

JAS-MV

- MoreVue Image Capture/Preview Software

MAP \$150.00