



USER MANUAL

TV Mirror

TV SIZES 10-INCH, 19-INCH, 27-INCH

MODEL NUMBERS

10.5
19.5
27.5

Thank you for selecting a Séura Television Mirror.

This product has been inspected and packaged carefully before shipment.

Please read this guide before beginning installation.

Please keep this manual for future reference.

Information in this manual is subject to change without prior notice.

FCC Information

This equipment has been tested and found to comply with limits for a class B digital device, pursuant to Part 15 of the FCC Rules. These limits are designed to provide reasonable protection against harmful interference in a residential installation.

This equipment generates, uses, and radiates radio frequency energy and, if not installed and used in accordance with the instructions, may cause harmful interference to radio communications.

There is no guarantee that interference will not occur in a particular installation. If this equipment causes unacceptable interference to radio and television reception, which can be determined by turning the equipment off and on, the user is encouraged to try to correct the interference by one or more of the following measures.

- Reorient or relocate the receiving antenna.
- Increase the separation between the equipment and receiver.
- Connect the equipment into an outlet on a circuit different from that to which the receiver is connected.

Consult the dealer or an experienced Radio/TV technician for additional help.



WARNINGS

To reduce the risk of fire, electrical shock and other injuries, keep these safety precautions in mind when installing, using, and maintaining your Television Mirror. The socket-outlet should be installed near the equipment and be easily accessible. The TV should be connected to a grounded GFCI protected main socket outlet.

WARNING: If you manipulate against the recommended usage, serious injury or death to user may result.

To protect against electric shock, do not immerse the power cord, power plug, or product in water or other liquid.

Do not overload AC outlets or extension cords. Overloading can cause fire or electric shock.

Close adult supervision is necessary when any product is used by or near children.

Do not operate any product with a damaged cord or plug or operate it after the appliance malfunctions or has been damaged in any manner.

Do not use the product close to any heat sources such as radiators, heat registers, stoves, or other products that produce heat.

Do not let the power cord come in contact with hot surfaces.

If you notice any smoke or scorched smell near the product, unplug power cord and refer to qualified personnel for service and/or repair.

Do not use or place any combustible or flammable substances near the product.

To electrically disconnect the product, turn OFF the product, then remove the electrical power plug from the outlet.

Do not place heavy articles on or step on the product.

Do not place the product on an unstable cart, stand, tripod or table.

Do not use this product for other than intended use.

This Séura product is only intended for use indoors.

This product is not waterproof. Do not immerse this product in water and/or expose to dripping or splashing water.

For added safety during a lighting storm, or when this product is left unattended and unused for long periods of time, unplug it from the wall outlet and disconnect the antenna.

Specifications of this product are subject to unannounced changes; this manual may thus not reflect the current technical status.



WARNING: READ ALL INSTRUCTIONS AND REVIEW ALL DRAWING SHEETS BEFORE ATTEMPTING TO INSTALL OR SERVICE THIS PRODUCT.

When installing and during use of this product, basic safety precautions should always be followed to reduce the risk of fire, electric shock and/or injury to persons including the following:

- Inspect the desired location for installation and be aware of all electrical wiring pathways, water pipes, gas lines, or other potentially hazardous conditions that may exist to protect from accidental damage during creation of on-site conditions.
- Ensure all required electrical specifications are adhered to and have been installed by the appropriate individuals and are code approved.
- Ensure all framing requirements, if needed, have been completed to building code and pose no structural issues.
- It is **REQUIRED** that this product is plugged into an electrical outlet protected by a Ground Fault Circuit Interrupter (GFCI) to protect against electric shock, fire, and/or injury. Failure to do so will void any warranty for this product.
- Only qualified individuals should attempt to service the product. Removing covers can expose you to high voltage and other dangerous conditions.
- To protect against electric shock, do not immerse the power cord, power plug, or product in water or other liquid.
- Do not overload AC outlets or extension cords. Overloading can cause fire or electric shock.
- Close adult supervision is necessary when any product is used by or near children.
- Do not operate any product with a damaged cord or plug or operate it after the appliance malfunctions or has been damaged in any manner.
- Do not let the power cord come in contact with hot surfaces.
- To electrically disconnect the product, turn **OFF** the product, then remove the electrical power plug from the outlet.
- Do not use this product for other than intended use.
- This Séura product is only intended for use indoors.
- This Séura product is not waterproof. Do not immerse this product in water and/or expose to dripping or splashing water as this could cause an electrical hazard.
- Retain this manual in a safe place for future reference.



WARNINGS:

Do not handle or remove your Television Mirror from the packaging until it is ready to be installed.

To avoid damage to the Television Mirror, only transport it in a vertical position. Transporting the product horizontally may permanently warp the mirror.

It is highly recommended that at least three (3) persons assist in the installation of the Television Mirror.

Contents

BEFORE USE

Lighting and Performance.....	5
Care and Maintenance	5

INSTALLATION AND SETUP

Display Requirements	6
Setup.....	7
Installation	8
Making Connections.....	9

MENUS AND SETTINGS

On Screen Display Menu (OSD).....	10
-----------------------------------	----

INTEGRATION AND CONTROL

RS-232 Protocol	14
IR Commands	17

TROUBLESHOOTING AND TECHNICAL DETAILS

Troubleshooting.....	18
Technical Features.....	18
Ports and Media Support	19
Product Limited Warranty	20

Lighting and Performance

The environment in which the Television Mirror is installed will affect the product performance. The key factors to consider for proper installation are surroundings and ambient light. Use the following guidelines to maximize the performance of the Séura product:

Type of Lighting

Avoid direct natural sunlight and excessive fluorescent lighting. These conditions will diminish the television brightness and hinder its performance.

Light Direction

Avoid directing light toward the mirror. Position lights such that they illuminate objects in the room, not the mirror itself. For example, lights on the wall next to the mirror are more favorable than lighting located on the ceiling in the center of the room.

Background Colors

Sidewalls and furnishings that are dark, uniform, and non-reflective will provide better performance of the display. Bright colors, patterns, and contrasting colors will minimize the quality of the display.



DO use ambient or indirect lighting that illuminates the room, not the Television Mirror.



DO use shades or window treatments to block outdoor light that would interfere with picture performance.



DO NOT position lighting directly on the Television Mirror. This will wash out the picture and hinder the product's performance.



DO NOT position the product opposite bright, untreated windows. Natural lighting will interfere with picture performance.

Care and Maintenance

Our patented mirror technology has been developed to completely protect the mirror surface and allow easy maintenance. Please follow the guidelines listed for proper mirror care and cleaning:

- The glass surface can be cleaned with any conventional non-ammoniated glass cleaner. Care should be taken to use only a soft lint-free cloth. Apply all cleaners directly to the cloth and not the mirror surface. Never saturate the mirror surface as residual cleaner may seep behind the mirror.
- Stubborn spots can be removed with solvents such as mineral spirits, de-natured alcohol, and acetone. Immediately remove solvent and dirt residues per the prescribed methods above with a compatible glass cleaner or water.

Display Requirements

Operation and Storage Requirements

The ambient temperature for operating the device is between 41 to 122 degrees Fahrenheit. Do not install the device in the proximity of heat sources, such as heating pipes, heaters, furnaces or other devices that radiate heat. Mount the device in such a way that it is protected against moisture. Trouble free operation is ensured up to 75% air humidity. To prevent fire or electric shock, never allow liquids to enter the unit. The product must be stored in dry and well-ventilated rooms, without extreme temperature fluctuations. Heat sources and aggressive active substances may not be stored in the proximity of the device. The required storage temperature is 32° F - 140° F at an air humidity of 5 - 85% RH non-condensing. The device must be stored in the complete packaging, as delivered.

Installation Environment

Avoid direct light or sun exposure, direct proximity to heat sources, outdoor installation. The product is specifically designed for indoor use only. There is the danger of fire and of electric shock and damage to the device if it is operated outdoors. Do not place any heat sources such as radiators and heat registers, etc. near the monitor. To reduce eye strain, avoid installing the Séura Television Mirror against a bright background such as a window. Position the monitor at the height of your eye level. Position the monitor directly in front of you at a comfortable viewing distance.

Installation

Have this product installed by qualified personnel only. Use the mounting systems which are specified or recommended by Séura. Install the product in a way that it is fixed properly and take care that children are not exposed to danger. Please take extra care during installation, avoid impacts. Before cabling your monitor, check that the power is off. To avoid any possibility of electric shock, always connect your equipment to properly grounded outlets. Use of power cords or adapters other than those provided may cause fire or malfunction. Place this product as close to the power socket as possible. Leave enough space to insert and remove the power plug on demand. Even if you switch off the product with your remote control, power is not cut off unless the power cord is unplugged.

The device may only be operated with the provided power adapter. The rated voltage is indicated on the product label. The device is factory-set to the optimal operating voltage (see Technical Specification). Use only power cords and plugs that are suitable for your local electrical outlets. Install the power cords in such a way that it does not obstruct anyone. Ensure furthermore that the cable is not clamped and that it cannot be pulled out accidentally from the power adapter. Do not install the power cords in the proximity of heating elements and never place heavy items on the cable or power adapter. Do not modify or arbitrarily repair the power cords.

CAUTION

Do not use any power cords or adapters other than those provided with this product! Use of power cords or adapters other than those provided with this product may cause fire, electric shock or malfunction. If several kinds of power cords are provided with this product, use the one that fits your power socket. Do not let the adapter hang down while using. Do not cover or wrap the adapter. Leave space around the adapter to prevent overheating. The individual components can be destroyed, if the polarity is reversed or an incorrect connection is used. A goodwill replacement is not possible in such cases, since each device is submitted to meticulous quality inspections prior to shipping. The connecting plugs must be attached in such a way that the connector is held firmly. Have trained technical personnel install the electrical facilities necessary for mounting. The power adapter must be installed in ventilated areas due to heat emission. Connect the power cord to a grounded outlet. Never cut or damage the power cord.

Please disconnect the device from the power adapter in the following cases:

1. The device is out of use for a lengthy period.
2. The device malfunctions or displays other unusual features, necessitating maintenance work.
3. During a thunderstorm.

Please plan the positioning of the power adapter and the source cables before proceeding with the structural measures and positioning of the Séura Television Mirror. Observe the protection zones when placing the power adapter! For in-wall applications please bear in mind that the power adapter has to be placed beyond the inset due to heat emission. Optional 50' adapter extension cables may be purchased from Séura.

NOTE

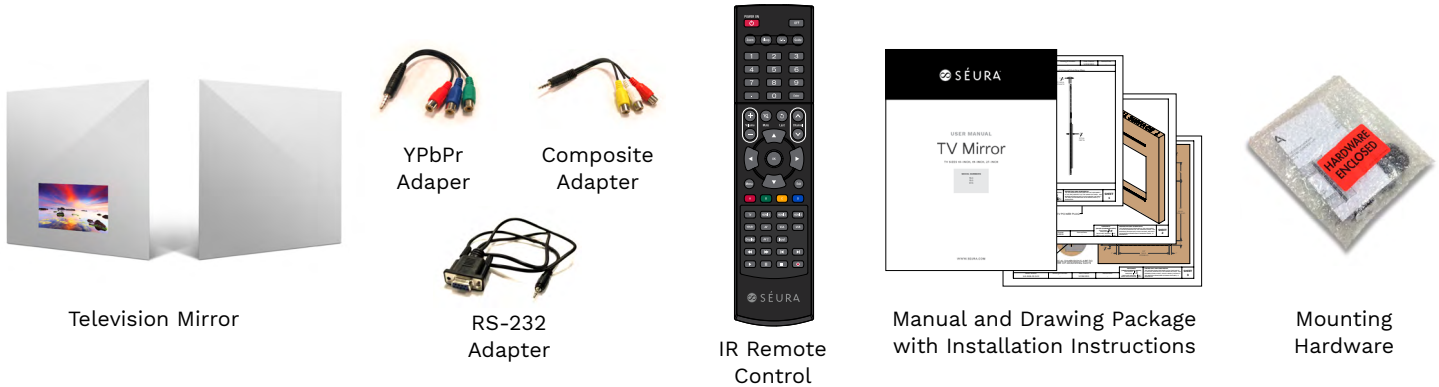
The power adapter should be adequately secured to prevent it from becoming unstable and/or falling. Make sure the power source circuits are properly grounded. Use the supplied power cord in order to connect it to the power source. If your installation requires a different power cord, be sure to use an officially approved power cord displaying the mark of the safety agency that defines the regulations for power cords in your country. Please consider that the AC outlet for the power adapter is placed within reach of the Séura Television Mirror and should be easily accessible in case it needs to be powered off.

Install the unit in a dry environment where the operating ambient temperature will not exceed 40°C / 104°F. Also, don't position the power adapter on top of the Séura monitor system in order to prevent thermal overload. Ensure that your installation complies with your national and local safety rules. Any servicing, adjustment, maintenance or repair must be performed only by service-trained personnel.

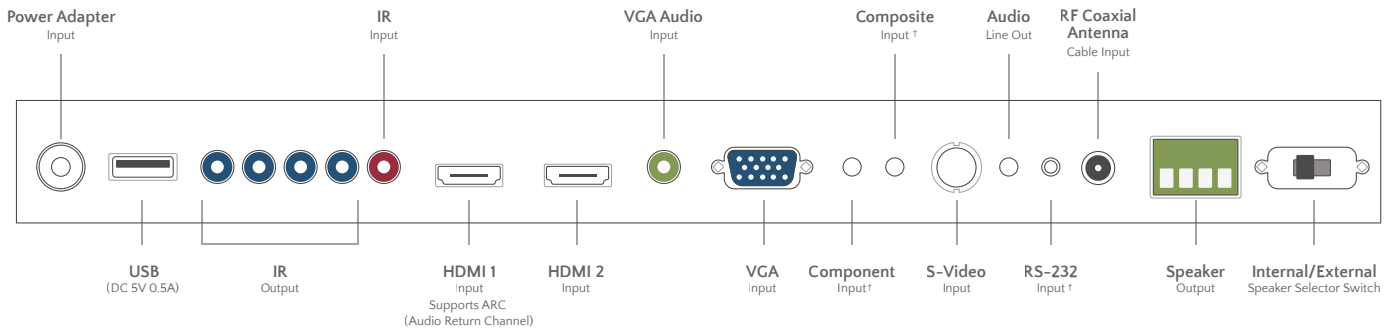
Ensure the power adapter is installed in an accessible location, to access it easily in case of a defect. If you choose to place the power adapter in a separate space, take care that ventilation is present, because the power adapters need convection cooling for stable working conditions.

When placing the power adapter in a fully enclosed space, make sure the air flow around the sides and top of the power adapter is not restricted. According to a common rule of thumb please calculate the length of the power adapter plus an additional gap of at least 150mm all around for DC 19V power adapters.

Before using the device please check the following contents of the box for completeness:

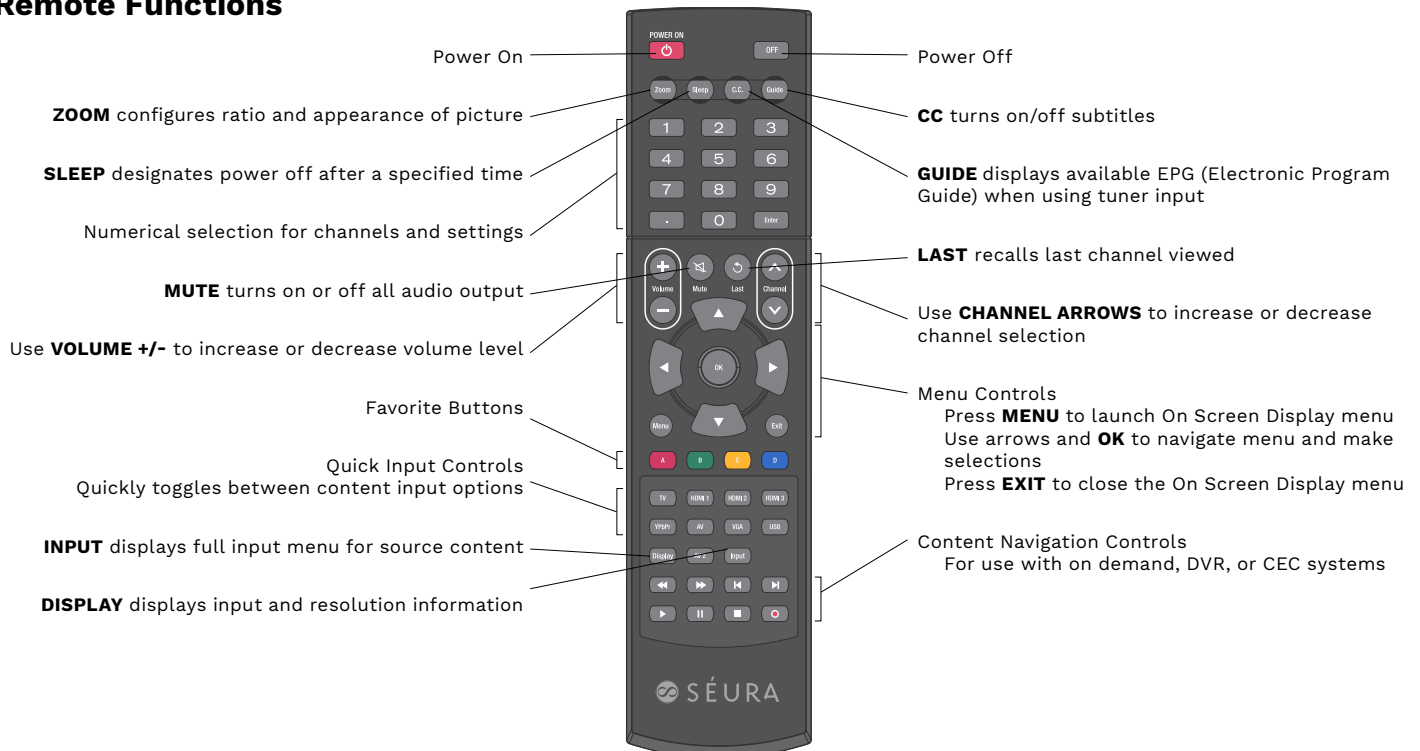


10, 19, and 27 inch Connections



† Mini jack connection on TV, product includes adapter cables

Remote Functions



Installation

Refer to the included custom drawing package for specific dimensions and instructions for your custom product.

1. Verify that the wall is prepared appropriately. If the product is an in-wall, or “Recessed” configuration, verify the dimensions of the rough opening.
2. Install mounting brackets according to the dimensions and instructions shown on “Sheet 3” of the included drawing package. Ensure mounting brackets are securely fastened using wood framing members where possible.

NOTE: Take care when moving the product. Always transport the product with at least two people.

WARNING: Always transport the product in a vertical position. Moving the product in an unsupported horizontal position may result in product flex or damage.

3. Connect power supplies and audio/video components.

- Testing all electrical and electronic devices to verify proper integration and functionality before securely mounting it to the wall is strongly recommended.

4. Position Television Mirror close to wall surface and securely engage mounting brackets.

- Allow for a 1/4" ventilation gap for proper air flow and heat transfer.

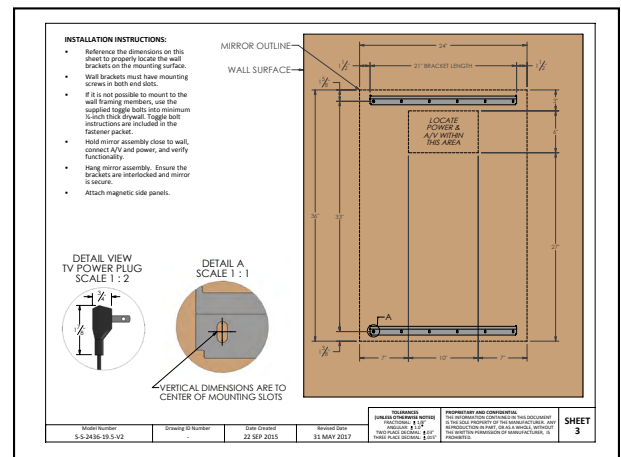
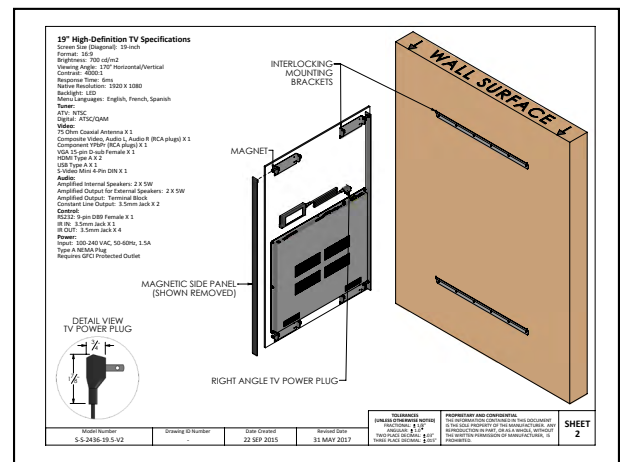
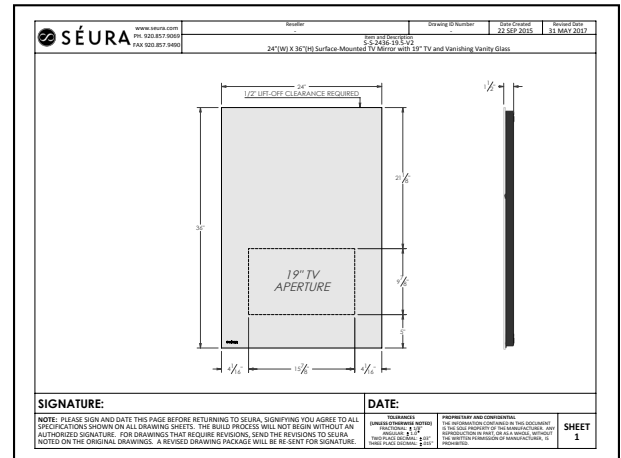
5. Check to ensure the Television Mirror is fully engaged and secure to the mounting brackets.

6. Reference the appropriate electronics manual for Television Mirror operating instructions.



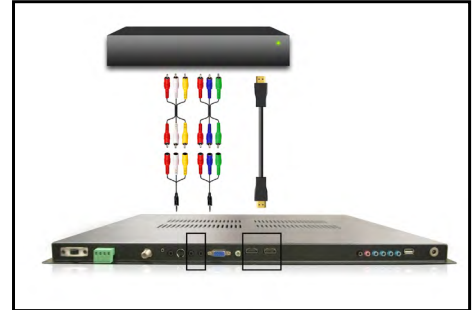
NOTE:

All Séura drawing packages indicate generalized nominal residential wood framing construction, and are not indicative of any particular building code. It is the installers responsibility that all electrical, audio/visual, and framing construction are code compliant to the municipality in which the product is being installed. Modifications made to Séura recommendations are at the sole discretion of the installer and release Séura of all liability.



Connecting Video

The Television Mirror features one Component, one Composite, one VGA, and two HDMI inputs. We recommend using the HDMI inputs for best video and sound quality.



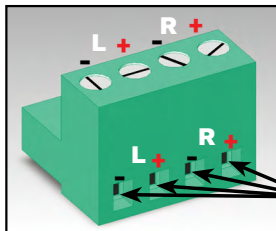
Connecting Audio

Two passive loudspeakers can be connected to the speaker output socket with speaker cables. Observe the polarity (+ and -) of the connections to avoid phase errors (= incorrect stereo playback).

Switch the audio selector switch on the TV to External.

Warning: When changing the audio from internal to external speakers, power-off the unit completely.

Euroblock Connector



Speaker Wire Input



Connecting a USB Media Source

Connect an external USB media source to the USB socket to display photos, play music or install a software update.

In order to have access to the USB port after installation we recommend installing a USB extension cable.



Connecting a Home Automation System

With the RS-232 interface (9 pin d-subminiature connector female) you can connect a serial cable for communication with a home automation system, PC, etc. The baud rate is 115200.




Visit www.seura.com for control documentation.



On Screen Display Menu (OSD)





On Screen Display Menu (OSD)

In the on screen display menu (OSD) you can adapt the characteristics of your display based on personal preferences. OSD menus include **Video, Audio, TV, Setup, and Parental**.

1. Press  on your remote control to open the OSD menu
2. Navigate within the OSD with the left/right and up/down arrows
3. Change settings with the left/right arrows
4. Go back one step with 
5. Confirm selection with the OK button
6. Press  to exit the OSD menu.

Input Source Selection

In the Input Source menu, you may select from the available input sources.

1. Press  to power the Television on
2. Press  to display the Input Source list OR use the quick input controls on the remote to directly designate the input source.
3. Press the up or down arrows until the desired Input Source is highlighted.
4. Press OK to confirm selection of the chosen input and clear the Input Source list from the screen or press  again to switch through the signal inputs.
5. Press  to close the Input Source list without selecting an alternative source.



Video Settings

The Video Settings menu offers options to enhance and refine the image characteristics of your Séura Television Mirror. These settings are based on ambient conditions of illumination and personal preferences.

Adjustment options include:

Picture Mode

Brightness

Contrast

Saturation

Hue

Sharpness

Back Light

Advanced Video

Reset Picture Mode



PICTURE MODE

Within the **Picture Mode** menu you can customize the image display according to your preferences.

Your options: **Home, Vivid, User, Cinema, Sport**

The **Home** setting is recommended for most viewing environments. Select the **User Mode** to adjust your preferred settings manually.

Advanced Video Settings

The Advanced Video Settings menu offers further options to refine the image characteristics of your Séura Television Mirror.

Adjustment options include:

- DNR**
- MPEG NR**
- Adaptive Luma Control**
- Flesh Tone**
- DI Film Mode**
- Blue Stretch**
- Game Mode**
- Blue Mute**
- Gamma**
- Color Temperature**



COLOR TEMPERATURE

Within the **Color Temperature** menu you can customize the **Color Temperature** of the picture according to your preferences.

Your options: **Standard, Warm, User, Cool**

Audio Settings

The Audio Settings menu offers options to enhance and refine the sound characteristics of your Séura Television Mirror based on personal preferences.

Adjustment options include:

- Balance**
- Bass**
- Treble**
- Sound Surround**
- Sound Mode**
- MTS**
- Audio Language**
- SPDIF Type**



OSD (cont.)

TV Settings

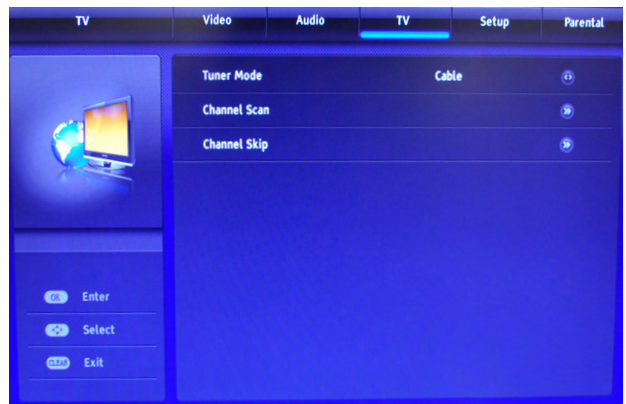
The TV Settings menu offers options to set up and adjust preferences using the built-in television tuner.

Adjustment options include:

Tuner Mode

Channel Scan

Channel Skip



TUNER MODE

Select the option for obtaining television programming: **Cable, Antenna**

CHANNEL SCAN

Select Channel Scan to begin automatic scanning of channels. This process takes a few minutes and depends on program availability.

CHANNEL SKIP

Designate preferences for skipping channels.

Setup Menu

The Setup Menu offers options to determine fundamental settings of your Séura Television Mirror based on personal preferences.

Adjustment options include:

OSD Language

Caption

Time Setup

Reset Default



TIME SETUP

Options within the Time Setup selection include **Time Zone, Time, and Sleep Timer.**


TIME ZONE

The local time zone may be selected using the graphical map of North America

SLEEP TIMER

Within the **Sleep Timer** menu you can determine a timespan after which the Séura Television Mirror will turn off automatically.

Your options: **Off, 10, 20, 30, 40, 50, 60, 90, 120 minutes**

 The Sleep Timer can also be activated and deactivated directly with on the remote control.



Parental Menu

The Parental Menu offers options to restrict program viewing based on various national rating systems.

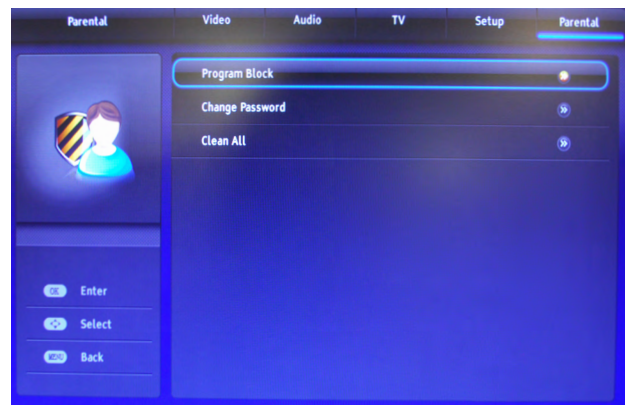
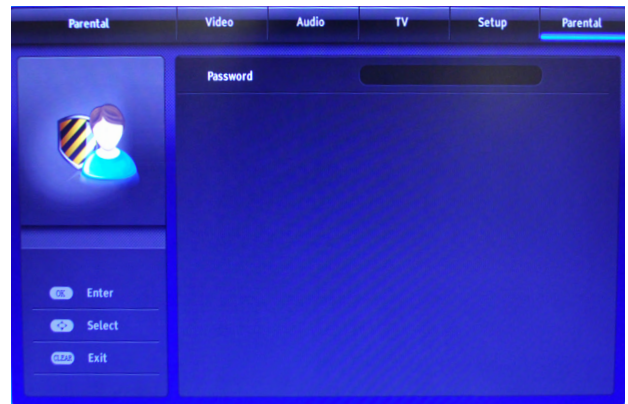
To access the menu, enter the 4-digit Password using the keypad on the remote. The factory default password is "0000".

Adjustment options include:

Program Block

Change Password

Clean All (or reset settings)



RS-232 Protocol

Settings Table

Baud Rate	115200 bps
Data Length	8 bits
Parity Bit	None
Stop Bit	1 bit
Flow Control	None
Start Bits	1
Stop Bits	1

Applies to Current Models:

- 10.5 TV Mirror
- 19.5 TV Mirror
- 27.5 TV Mirror
- 19.5 Hydra
- 27.5 Hydra

Basic Format for Control:

The Transmission of data from the Controller (Computer or A/V Controller) starts with an STX [0x02] signal, followed by the command, then the parameters, and lastly an ETX [0x03] signal. If there are no parameters, then the parameter does not need to be sent. A colon separates the commands from the parameters.

All Commands start with STX [0x02] and end with ETX [0x03]. Any data not contained between the STX and ETX commands will be ignored by the TV. **STX and ETX must be sent as hex commands; all other data must be sent as ASCII characters.**

NOTE: The brackets [] in the rest of this document do not get sent or returned in the command/query. They are there to indicate characters to be sent in hex.

All responses from the TV to Queries start with STX [0x02] and end with ETX [0x03]. Any data not contained between the STX and ETX commands must be ignored by the controller. **STX and ETX must be sent as hex commands; all other data must be sent as ASCII characters.**

Optional ID number: Three ASCII digits ranging from 000-255. Each TV will have the option in the Factory Menu of setting a Unit ID Number. A Semicolon (;) separates the ID Number from the Command.

The ID number may be set on the TV in the Service Menu. ID number 000 sends to all devices regardless of the ID number of individual devices (global command).

Contact Séura Technical Support for instructions on accessing the Service Menu at 800-957-3872 or techsupport@seura.com

- Each command is a string of ASCII characters plus a Parameter.
- A colon separates the Command from the Parameter.
- The Parameter is 1 to 5 ASCII characters long.
- After each command is received, the TV shall send back an acknowledgment.
- For most commands, this will be a simple STX[0x02] , the ASCII letters “OK”, and an ETX[0x03]
- If there is an error, the TV shall return STX [0x02], the ASCII letters “ER”, and ETX [0x03]. There may be parameters added after a colon if more details are possible.
- If a command is sent to a TV that does not support this command, i.e. a tuner command for a monitor, the set shall return STX [0x02], the ASCII letters “INVALID” or “ERR” and ETX [0x03].

NOTE: AMX programmers may need to add 100ms delays between parameters in commands.

Examples:

All commands are ASCII, except STX and ETX, which must be sent in hex. **NOTE: The brackets [] in the rest of this document do not get sent or returned in the command/query. They are there to indicate characters to be sent in hexadecimal form.**

Example of a Power ON for Unit 001:

COMMAND: [0x02]001;PWD:1[0x03]
TV Returns: [0x02]OK[0x03]

Example of a Power ON with No Unit Number:

COMMAND: [0x02]PWD:1[0x03]
TV Returns: [0x02]OK[0x03]

Query Examples:

Use a “?” as the parameter and the TV will return the current value for that command.

There is no “OK” returned after a query.

Example of a Power Query with no Unit Number.

[0x02]PWD:?[0x03]

Would return this status if the TV is ON:

[0x02]1[0x03]

Or, this status if the TV is OFF:

[0x02]0[0x03]

Example of a Volume Query with No Unit Number, assumes that the Volume is set at 50. [0x02]VOL:?[0x03]

TV Returns: [0x02]50[0x03]

Query only works with the Following Commands

Power	PWD
Channel	CHA
Input	INP
Volume	VOL
Mute	MUT

KEY COMMANDS: These commands are the equivalent of sending the IR code from the remote control.

KEY	COMMAND	RESPONSE
DIGIT 0	[0x02]KEY:0[0x03]	[0x02]OK[0x03]
DIGIT 1	[0x02]KEY:1[0x03]	[0x02]OK[0x03]
DIGIT 2	[0x02]KEY:2[0x03]	[0x02]OK[0x03]
DIGIT 3	[0x02]KEY:3[0x03]	[0x02]OK[0x03]
DIGIT 4	[0x02]KEY:4[0x03]	[0x02]OK[0x03]
DIGIT 5	[0x02]KEY:5[0x03]	[0x02]OK[0x03]
DIGIT 6	[0x02]KEY:6[0x03]	[0x02]OK[0x03]
DIGIT 7	[0x02]KEY:7[0x03]	[0x02]OK[0x03]
DIGIT 8	[0x02]KEY:8[0x03]	[0x02]OK[0x03]
DIGIT 9	[0x02]KEY:9[0x03]	[0x02]OK[0x03]
SLEEP	[0x02]KEY:11[0x03]	[0x02]OK[0x03]
CC	[0x02]KEY:12[0x03]	[0x02]OK[0x03]
MENU (TOGGLE)	[0x02]KEY:21[0x03]	[0x02]OK[0x03]
DISPLAY (TOGGLE)	[0x02]KEY:22[0x03]	[0x02]OK[0x03]
VOL+ (Navigate Right)	[0x02]KEY:23[0x03]	[0x02]OK[0x03]
VOL- (Navigate Left)	[0x02]KEY:24[0x03]	[0x02]OK[0x03]
CH+ (Navigate Up)	[0x02]KEY:25[0x03]	[0x02]OK[0x03]
CH- (Navigate Down)	[0x02]KEY:26[0x03]	[0x02]OK[0x03]
PICTURE MODE STANDARD	[0x02]KEY:27[0x03]	[0x02]OK[0x03]
PICTURE MODE DYNAMIC	[0x02]KEY:28[0x03]	[0x02]OK[0x03]
PICTURE MODE THEATER	[0x02]KEY:29[0x03]	[0x02]OK[0x03]
PICTURE MODE PERSONAL	[0x02]KEY:30[0x03]	[0x02]OK[0x03]
PLAY	[0x02]KEY:115[0x03]	[0x02]OK[0x03]
PAUSE	[0x02]KEY:116[0x03]	[0x02]OK[0x03]
STOP	[0x02]KEY:117[0x03]	[0x02]OK[0x03]
SKIP FORWARD/CHAPTER +	[0x02]KEY:118[0x03]	[0x02]OK[0x03]
PREVIOUS CHANNEL ¹	[0x02]KEY:35[0x03]	[0x02]OK[0x03]
ENTER	[0x02]KEY:36[0x03]	[0x02]OK[0x03]
OK	[0x02]KEY:37[0x03]	[0x02]OK[0x03]
INPUT SELECT (TOGGLE)	[0x02]KEY:38[0x03]	[0x02]OK[0x03]
SKIP BACKWARD/CHAPTER -	[0x02]KEY:19[0x03]	[0x02]OK[0x03]
FAST FORWARD	[0x02]KEY:109[0x03]	[0x02]OK[0x03]
FAST BACKWARD	[0x02]KEY:112[0x03]	[0x02]OK[0x03]
EXIT	[0x02]KEY:110[0x03]	[0x02]OK[0x03]
DIGIT . (dot) (ATSC SUB-CH) ¹	[0x02]KEY:104[0x03]	[0x02]OK[0x03]
GUIDE ¹ (TOGGLE)	[0x02]KEY:105[0x03]	[0x02]OK[0x03]
RED	[0x02]KEY:32[0x03]	[0x02]OK[0x03]
GREEN	[0x02]KEY:114[0x03]	[0x02]OK[0x03]
YELLOW	[0x02]KEY:111[0x03]	[0x02]OK[0x03]
BLUE	[0x02]KEY:113[0x03]	[0x02]OK[0x03]

RS-232 Protocol

INPUT (INP)

	COMMAND	RESPONSE	QUERY	RESPONSE
VGA	[0x02]INP:0[0x03]	[0x02]OK[0x03]	[0x02]INP:?[0x03]	[0x02]0[0x03]
HDMI 1	[0x02]INP:1[0x03]	[0x02]OK[0x03]	[0x02]INP:?[0x03]	[0x02]1[0x03]
TUNER	[0x02]INP:2[0x03]	[0x02]OK[0x03]	[0x02]INP:?[0x03]	[0x02]2[0x03]
AV1	[0x02]INP:3[0x03]	[0x02]OK[0x03]	[0x02]INP:?[0x03]	[0x02]3[0x03]
HDMI 2	[0x02]INP:6[0x03]	[0x02]OK[0x03]	[0x02]INP:?[0x03]	[0x02]6[0x03]
COMPONENT	[0x02]INP:7[0x03]	[0x02]OK[0x03]	[0x02]INP:?[0x03]	[0x02]7[0x03]

POWER (PWD)

	COMMAND	RESPONSE	QUERY	RESPONSE
OFF	[0x02]PWD:0[0x03]	[0x02]OK[0x03]	[0x02]PWD:?[0x03]	[0x02]0[0x03]
ON	[0x02]PWD:1[0x03]	[0x02]OK[0x03]	[0x02]PWD:?[0x03]	[0x02]1[0x03]
TOGGLE	[0x02]PWD:3[0x03]	[0x02]OK[0x03]	N/A	N/A

MUTE (MUT)

	COMMAND	RESPONSE	QUERY	RESPONSE
MUTE	[0x02]MUT:1[0x03]	[0x02]OK[0x03]	[0x02]MUT:?[0x03]	[0x02]1[0x03]
UN-MUTE	[0x02]MUT:0[0x03]	[0x02]OK[0x03]	[0x02]MUT:?[0x03]	[0x02]0[0x03]

CHANNEL (CHA) ¹

COMMAND	RESPONSE	QUERY	RESPONSE
[0x02]CHA:xxx.x[0x03]	[0x02]OK[0x03]	[0x02]CHA:?[0x03]	[0x02]xxx.x[0x03]

VOLUME (VOL)

COMMAND	RESPONSE	QUERY	RESPONSE
[0x02]VOL:xxx[0x03]	[0x02]OK[0x03]	[0x02]VOL:?[0x03]	[0x02]xxx[0x03]

xxx = Volume value 000 -100

FORMAT (FOR)

FORMAT	COMMAND	RESPONSE
4:3	[0x02]FOR:0[0x03]	[0x02]OK[0x03]
16:9	[0x02]FOR:1[0x03]	[0x02]OK[0x03]
ZOOM	[0x02]FOR:3[0x03]	[0x02]OK[0x03]
1:1	[0x02]FOR:5[0x03]	[0x02]OK[0x03]

Troubleshooting

If the product is not working properly, please check the following troubleshooting hints before you contact customer service:

Symptoms	Possible Solution
Blank screen	Check the status LED. The LED should illuminate blue for a few moments when the TV is powered on, then extinguish. Please check if an input source is available and that the port of the device has been connected correctly in the Service Settings/ Input Ports menu. Press "Menu" on your remote control: you should see the OSD menu. Check your settings for misconfigurations and adjust accordingly. Alternatively, perform a factory reset to restore the Television Mirror to its default settings. If the problem still exists contact customer service.
Color defects	Check that the signal cable connector is properly connected and that the connection pins are not bent or damaged.
The image is unsatisfactory	Adjust the picture characteristics as described in the above-mentioned section "Video Settings". Image is not stable Check that the display resolution and frequency from your media source is compatible with the Television Mirror.
Error message: "No Signal"	Check that the connected media sources are switched on. Check that the signal cable connector is properly connected and that the connection pins are not bent or damaged. Press "Menu" on your remote control: you should see the OSD menu. Check your settings for misconfigurations and adjust accordingly. Alternatively, perform a factory reset to restore the Television Mirror to its default settings. If the problem still exists contact customer service.
Low or no sound	Press "Volume Up" and/or "Volume Down" on your remote control and check the audio connection cable(s). Make sure that the Volume Limit setting in the Service Settings menu has been set to an audible value. Ensure that the speaker selector switch on the until is correctly switched to designate internal or external speakers.
Remote control doesn't work	Replace the batteries in the remote. Tip! If the problem persists, verify that the remote is sending IR signal by observing the IR output on the remote via a cell phone camera. IR signal will appear blue in the camera. If there is no IR signal or the problem persists, contact customer service.

NOTE: If the above troubleshooting hints do not help you to find a solution, please contact Séura.

Technical Features

Features	10"	19"	27"
Display Backlight	TFT Thin Film Transistor LED Backlight		
Active Screen Area W x H	18.03" x 12.56"	21.54" x 18.23"	26.73" x 22.64"
Diagonal	10"	19"	27.2"
Picture Format	16:10	16:10	16:9
Physical Resolution	1024 x 600	1440 x 900	1920 x 1080
Viewing Angle	Horizontal Typical (Total) 178° (Left: 89° / Right: 89°) Vertical Typical (Total) 178° (Up: 89° / Down: 89°)	Horizontal Typical (Total) 178° (Left: 89° / Right: 89°) Vertical Typical (Total) 178° (Up: 89° / Down: 89°)	Horizontal Typical (Total) 176° (Left: 88° / Right: 88°) Vertical Typical (Total) 176° (Up: 88° / Down: 88°)
Brightness	700 cd/m2	700 cd/m2	700 cd/m2
Contrast	Typical 500:1	Typical 1000:1	Typical 1200:1
Response Time	8ms	6.5ms	6ms
Power Consumption	DC 19V 10W / .083A	DC 19V 40W / .333A	DC 19V 50W / .417A
Operating Temperature	32° to 122° Fahrenheit		
Humidity	20 - 80% RH, Non-Condensing		
Certification	CE, FCC		

NOTE: Above specification may be changed without prior notification for quality improvement.

Ports

Input Ports	LINE Audio INPUT	1 x mini jack and adapter cable: RCA terminal, white, red, yellow
	Component Input	1 x mini jack and adapter cable: RCA terminal, red, green, blue
	HDMI™ Input	2 x HDMI™ terminal
	USB	1 x USB terminal
	RS232	1 x mini jack and adapter cable: D-SUB 9pin female
	IR Input (Infrared)	1 x mini jack 3.5mm
	S-Video	1 x 4-pin mini DIN
	PC Audio In	1 x mini jack 3.5mm
Output Ports	Speaker Output	1 x Phoenix clip 4pin
	IR Output	4 x mini jack 3.5mm
	Audio Line Out	2 x mini jack 3.5mm
Video	HDMI™	480i, 480p, 576i, 576p, 720p, 1080i, 1080p
	Component (YPbPr / YCbCr)	480i, 480p, 576i, 576p, 720p, 1080i, 1080p
Audio Output	Speaker Output	2 x 5W RMS @ 8Ω per channel

Special Features

Multimedia Player	USB
Software Update	USB
RS-232	Yes
Noise Reduction	3D

USB Media Support

USB Media Support	File Extension	Video	Audio
Movie	.avi	DivX, XviD, MPEG-4	MP3, WMA, AAC
	.mpg	MPEG-1, MPEG-2	
	.dat	MPEG-1	
	.mov / .mkv	H.264	
Music	.mp3	--	MP3
	.wma	--	WMA
	.m4a / .aac	--	AAC
Photo	.jpg / .jpeg	Progressive JPG	
		Baseline JPEG	
	.bmp	BMP	
	.png	Non-Interlaced	
		Interlaced	

NOTE: Above specification may be changed without prior notification for quality improvement.

If a Séura, Inc. (“Séura”) Product (the “Product” or “Products”) fails to work or operate properly because of a defect in materials or workmanship, Séura will, for the length of the period indicated below, (starting on the date of the customer’s purchase receipt for the Product), at its option, either; (a) repair the Product with new or refurbished parts onsite or at Séura’s factory, including Séura’s labor if applicable; or (b) replace the Product with a new or refurbished Product; or (c) refund of the lesser of a pro rata share of the current MSRP as determined by the remainder of the warranty period if replacement of the Product is not commercially feasible. The remedy chosen will be in good faith and at the discretion of Séura.

Séura warrants **Lighted Mirrors** (excluding Select Lighted Mirrors) with respect to Séura’s labor for three (3) years; mirror, glass, structure, frame, and assembly for three (3) years; electrical for five (5) years; LED light strips for five (5) years. Fluorescent lamps are not warranted.

Séura warrants **Select Lighted Mirrors** with respect to Séura’s labor for one (1) year; mirror, glass, structure, frame, and assembly for one (1) year; electrical for three (3) years; LED light strips for three (3) years. Fluorescent lamps are not warranted.

Séura warrants **TV Mirrors** with respect to Séura’s labor for three (3) years; mirror, glass, structure, frame, and assembly for three (3) years; TV including remote and power supply for two (2) years.

Séura warrants **Lighted TV Mirrors** with respect to Séura’s labor for three (3) years; mirror, glass, structure, frame, and assembly for three (3) years; electrical excluding TV for five (5) years; LED light strips for five (5) years. TV including remote and power supply for two (2) years. Fluorescent lamps are not warranted.

Séura warrants **Indoor Waterproof TVs** with respect to Séura’s labor for three (3) years; glass, structure, frame, and assembly for three (3) years; TV including remote and power supply for two (2) years.

Séura warrants **Outdoor TVs** with respect to Séura’s labor for two (2) years; glass, structure, frame, and assembly for two (2) years; TV including remote and power supply for two (2) years.

Séura warrants **Indoor and Outdoor TV Mounts** for two (2) years against defects in original hardware and/or workmanship. Excludes corrosion or rust resulting from damaged, scratched or chipped paint or other surfaces.

Séura warrants **Protective TV Covers** for two (2) years against material and/or workmanship defects. Excludes normal wear & tear.

This Limited Warranty extends only to the original purchaser of a Product and only covers a Product purchased new. Séura reserves the right to require any warranty claimant to produce the original purchase receipt or other original purchase date proof as may be reasonably required by Séura to verify the Product’s warranty eligibility. Séura reserves the right to examine all failed product components and determine, in its sole discretion, whether any product components are defective and covered under warranty.

1. **Exceptions to Warranty:** Séura does not warrant the Products against defects arising out of, related to, or caused by, whether totally or partially, and whether directly or indirectly, any of the following:

- A. Failing to properly clean and maintain, any Product, part or component of a Product, including, but not limited to, filters, front bezel, and other Product areas or components;
- B. A Product’s extended use, including particularly, commercial applications, where a Product is operating on average more than twelve (12) hours per day on a permanent or extended periodic basis;
- C. Circumstances, damage (including concealed damage) or other conditions occurring during shipment of a Product or at any time after a Product leaves Séura’s facility;
- D. Circumstances, damage or other conditions occurring during unpacking and/or removal of a Product from its original packaging, including the removal of protective material;
- E. Circumstances, damage or other conditions occurring during transport of the Product to or from Séura before or after authorized service. Products must be packed properly using original packaging or Séura replacement or pre-authorized packaging. Customer assumes all risk, and costs, including transportation costs, while Product is in transit to or from Séura.
- F. Improper, incorrect, or insufficient AC supply voltage to a Product;
- G. Alterations, modifications, including use of unauthorized mount, or changes to a Product without Séura’s prior written authorization;
- H. The incorporation of a Product into or within a Product of a third party, without Séura’s prior written authorization;
- I. A Product’s misuse, neglect use, abuse, or improper operation, including the failure to follow a Product’s normal and ordinary operating instructions;
- J. The effects of fire, flood, lightning, electrical surges, water and other liquid infiltration, smoke, insect or animal infestation, sand, mud, chemicals, improper cleaning agents and other substances not intended to come into contact with a Product, including any such substances contact with a Product as the result of acts of God;
- K. The improper or faulty installation, setup, or adjustment of a Product;
- L. A Product’s repair, attempted repair, or total or partial disassembly by any party other than a Séura authorized service representative;
- M. When the Product occurs with pixel errors within the specified and permitted area. For more information about this, inquire directly with Séura regarding the Séura Pixel Policy.
- N. Corrosion that does not affect the performance of a Product or the reasonable cosmetic appearance of a Product; and
- O. Scratches or other paint or finish damage to a Product that lead to or are caused by, in part or in total, corrosion.
- P. When a Lighted Mirror or Lighted TV Mirror using LEDs retains an overall brightness greater than 70% of the original brightness, including cases whereas an individual LED fails.
- Q. Lack of proof of original proof of purchase.
- R. Damage due to exhausted or incorrectly installed batteries.

2. **Warranty Disqualifiers.** This Limited Warranty does not apply, and Séura makes no warranties or representations, with respect to any Product being free from defects in materials or workmanship if the Product was purchased from a seller who is not authorized, by Séura, to sell Séura Products, is owned by or is in possession of an individual or entity who is not the original purchaser of the Product, or if the Product’s original Séura serial number has been removed, defaced, replaced, or otherwise tampered with in any manner.

3. **LIMITATION OF LIABILITY.** THE SPECIFIC TERMS OF THIS LIMITED WARRANTY ARE IN LIEU OF ALL OTHER WARRANTIES, ORAL, EXPRESSED OR IMPLIED, INCLUDING, BUT NOT LIMITED TO, ANY IMPLIED WARRANTIES OF FITNESS FOR A PARTICULAR PURPOSE OR USE. SÉURA WILL NOT BE LIABLE FOR ANY DAMAGE TO OTHER PROPERTY CAUSED BY ANY DEFECT IN THE PRODUCT, DAMAGES BASED ON INCONVENIENCE, LOSS OF BUSINESS OPPORTUNITY, LOSS OF GOODWILL, INTERFERENCE WITH BUSINESS RELATIONSHIPS, OR OTHER COMMERCIAL LOSS, EVEN IF THE CUSTOMER HAS BEEN ADVISED OF THE POSSIBILITY OF SUCH DAMAGES. SÉURA WILL NOT BE LIABLE FOR ANY LOSS, DAMAGE OR LIABILITY OR ANY DIRECT, INCIDENTAL, INDIRECT, PUNITIVE, SPECIAL OR CONSEQUENTIAL DAMAGES RESULTING FROM THE USE OR MISUSE OF A PRODUCT, OR ARISING OUT OF ANY BREACH, BY THE PURCHASER OF A PRODUCT, OF THIS LIMITED WARRANTY. SÉURA SHALL NOT BE LIABLE FOR ANY CLAIM AGAINST THE CUSTOMER BY ANY OTHER PARTY. SÉURA SHALL NOT BE LIABLE FOR ANY VERBAL WARRANTY ASSURANCES MADE BY A SÉURA EMPLOYEE OR A SÉURA AUTHORIZED DISTRIBUTOR, RESELLER OR INSTALLER THAT CONFLICTS WITH OR ENHANCES THE WRITTEN WARRANTY HEREIN. SOME STATES DO NOT ALLOW THE EXCLUSION OR LIMITATION OF INCIDENTAL OR CONSEQUENTIAL DAMAGES, OR LIMITATIONS ON HOW LONG AN IMPLIED LIMITED WARRANTY LASTS; SO THE EXCLUSIONS MAY NOT APPLY TO A PARTICULAR PURCHASER. NOTWITHSTANDING ANYTHING CONTAINED IN THIS LIMITED WARRANTY TO THE CONTRARY, SÉURA’S MAXIMUM AGGREGATE LIABILITY TO A PURCHASER RELATED TO ANY WARRANTY CLAIM OR ALLEGATION OF A DEFECT WITH RESPECT TO A PRODUCT SHALL NOT EXCEED THE THEN CURRENT SÉURA WHOLESALE PRICE OF THE SPECIFIC PRODUCT FROM WHICH THE WARRANTY CLAIM DERIVES.

NOTICE OF ANY WARRANTY CLAIM MUST BE RECEIVED BY SÉURA, IN WRITING, PRIOR TO THE EXPIRATION OF THE APPLICABLE WARRANTY PERIOD SET FORTH ABOVE. THE PRODUCT WARRANTY APPLIES ONLY FOR THE PERIODS SET FORTH ABOVE.

4. **Warranty Procedure.** A warranty claimant must contact Séura at **920-857-9069** for a diagnostic. Please have your Product receipt available. At that time, Séura will provide technical support over the phone to attempt to fix the problem. If unsuccessful, a Séura Representative will determine if the Product will be serviced onsite, replaced, or returned to Séura’s factory in Green Bay, Wisconsin for repair.

- Toll-Free Technical Support: Please call 1-800-957-3872 to speak with a Séura Technical Support Representative. Séura Representatives are available Monday-Friday, 8:00am-4:30pm Central Time.
- Onsite Service: If Technical Support determines the problem may be fixed onsite, a Séura service agent will be scheduled within 24 hours to service the unit. A Séura representative will work with the customer to schedule a convenient time for onsite service. Parts may be sent to the customer’s location. Onsite service is available in the United States during normal business hours Monday – Friday, unless other special circumstances exist and special arrangements are made.
- Factory Service: If Technical Support determines the Product must be sent back to Séura’s factory for repair, the customer must follow return instructions below. Séura will ship the repaired Product to the authorized reseller, installer or customer’s address. This warranty does not cover removal or installation costs of Products.
- Advanced Replacement: If Technical Support determines the Product must be replaced, Séura will ship a new Product to the authorized reseller, installer or customer’s address. The customer must follow return instructions below to send the damaged Product back to Séura’s factory. Credit card information will be collected before shipment of the replacement Product. If Séura does not receive the original Product back within thirty (30) days of shipping the replacement Product, the credit card on file will be charged at full MSRP. This warranty does not cover removal or installation costs of Products.

Return Instructions: If return is necessary, Séura will issue a return goods authorization (RGA) number and, if applicable, specific return and shipping instructions. A Product will only be accepted for warranty claims if returned and shipped to Séura in the Product’s original packaging materials. If original packaging is not available, please contact Séura to receive authorized replacement packaging. Packages not bearing the issued returned goods authorization (RGA) number will not be accepted by Séura and will be returned to sender. In addition to the Product, the package must include the warranty claimant’s original sales receipt for the purchase of the Product. All Product returns shall be received by Séura, at 1230 Ontario Road; Green Bay, WI 54311 with freight prepaid by the warranty claimant. Séura shall not be responsible for, and the warranty claimant assumes and retains all such responsibility, any damage or loss to or of the Product during shipment to and from Séura as the result of a warranty claim.

5. **Exclusive Remedy.** This Limited Warranty sets forth the exclusive remedies of a warranty claimant with respect to allegations of a defective Product.

